

OPERATOR UPGRADES

(Operator Refresher Training)

Health & Safety sessions for Mobile Plant & lifting equipment operators



Employers have an obligation to provide ongoing & updated training for their employees to provide a safe workplace. One of the highest risk areas identified in industry is that of mobile plant operation & the use of lifting equipment.

Training & Certification (where required) is the first step in this process & many employers are now providing regular update training sessions for their operators to raise their safety awareness.

A.T.S. now offers short training sessions for operators of these types of equipment with the following advantages :

- ❑ **Time Effective.** Each session runs for approximately 4 Hours & includes a 20 minute video, safety handouts, class discussion & completion of a competency based assessment. Statements of attainment to NOHSC 7019 standards are issued to successful applicants. These sessions are recommended for repeat at three yearly intervals.
- ❑ **Cost Effective.** P.O.A
- ❑ **Improved Safety Performance.** Even experienced & competent operators need regular reminders of safe work procedures.

- ❑ **Forklift Training & Safety** Recommended for all your plants Forklift Operators.

- ❑ **Cranes, Hoists & Slings** Recommended for Crane Drivers, Dogmen, Riggers & any personnel who commonly work around lifting equipment.

- ❑ **Overhead Crane Safety** Recommended for operators of overhead & jib cranes. * Operators of pendant controlled overhead cranes do not require certification but should still be trained in the safe use of this equipment. Are your operators properly trained?

- ❑ **Elevated Work Platforms** Recommended for E.W.P. operators

- ❑ **Loadshifting** Recommended for operators of earthmoving equipment.

You regularly reinforce safety for your employees with updates on issues such as manual handling etc. Why don't you do the same for your **Mobile Plant & Lifting Equipment Operators ?**

For enquiry's ring Ralph on **0402 400 154**.

**Australian
Testing
Services**

ABN – 99322094398

RTO# 21642

Ralph Wollard
81 King St
Portland VIC 3305.

Ph/fax: 03 55 235491
Mobile: 0402400154
Email:
australiantesting@iprimus.com.au

Registered National Assessor
No: V7061

OPERATOR UPGRADES

Why do refresher training for your operators?

Occupational Health & Safety Regulations state :

An Employer must not allow an employee to do any such work unless the employee holds an appropriate certificate of competency with respect to that work.

Most employers do the right thing & ensure that only trained & certificated operators operate at their workplace. This is a vital first step in ensuring a safe workplace.

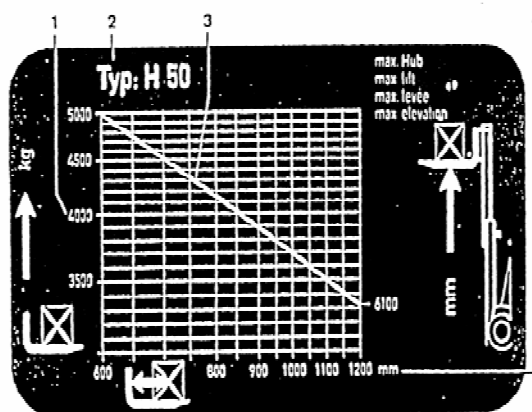
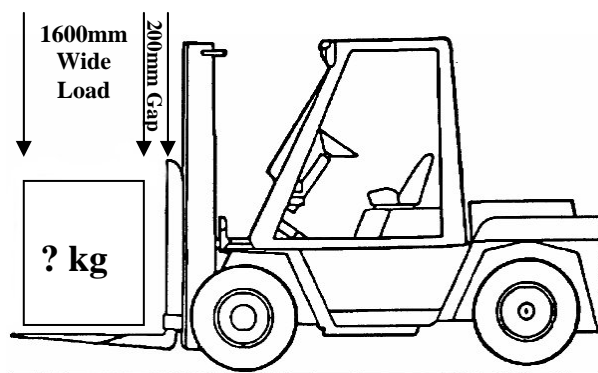
Regulations go further than this & require employers to provide ongoing & updated training. If one of your operators has an accident that requires investigation by Workcover it will be expected that you can supply proof of this training being completed.

TRY THIS SIMPLE TEST

A Forklift Operator that cannot interpret the load chart on his or her machine cannot be deemed as competent. Many operators forget how to do this or were never taught in the first place.

Fold this sheet in half & present the simple problem below to one of your operators. Choose an operator that has had forklift certification for a number of years & who you feel is a competent operator. If they have any difficulty completing this problem then they need further training.

Qu. Your employer has you operating a Hyster H50 forklift at your workplace. A load arrives on the back of a truck that needs unloading. You feel that this load may be approaching the safe working capacity of your machine so you need to check on your Data plate. Because of the way the load is positioned on the truck you find that when you go to pick it up there is a gap of 200mm between the load & the heel of the forks, as illustrated below. Using the load chart below, Calculate the maximum load that this machine can pick up at this configuration.



1. Max. liftable load in kg
2. Forklift model No.
3. Height of lift - 6100mm
4. Distance of load centre from backrest in mm